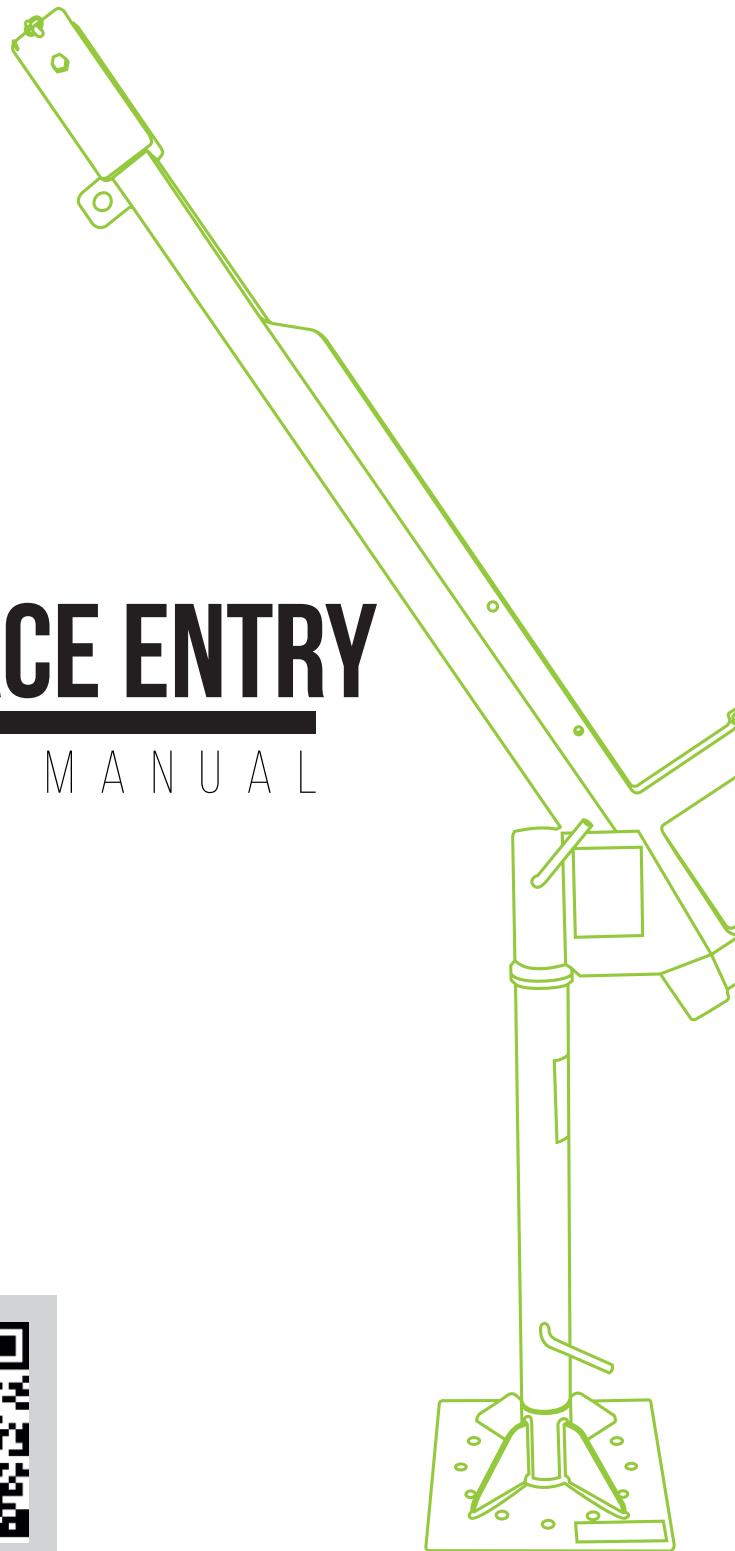


FRONTLINE®

FALL PROTECTION



CONFINED SPACE ENTRY

INSTRUCTION MANUAL



THE INSTRUCTIONS APPLIES TO THE FOLLOWING MODELS:

DAN75-US



BKFL 05

WARNING

You must read and fully understand all instructions, or have all instructions explained to you, before attempting to use this equipment. Equipment must not be installed, operated or inspected by anyone who does not understand this Guide. Failure to observe these instructions could result in serious injury or death. Careless or improper use of this equipment can result in serious injury or death. Training and instruction review should be repeated at regular intervals. If you have any questions regarding these instructions or need additional copies, contact Frontline Fall Protection at: www.FrontlineFall.com or info@FrontlineFall.com

IMPORTANT: THESE INSTRUCTIONS SHOULD BE KEPT WITH THE DEVICE AT ALL TIMES.

Description:

Frontline Davits are designed to be used principally with Frontline winches and SRLs. The davit can be used where a tripod or quadpod is either impractical or impossible to use. The davit base is permanently attached to the floor/ground, and the davit boom can be removed and moved from one base to another (including portable quadpod bases) to provide a convenient, portable attachment point.

The Frontline Permanent Davit consists of three parts (Figure 3 & 4):

Base - The base is a 1/2" thick 14" long square plate with a cylindrical shaft (1) in the center that is supported by 4 ribs. The plate has 12, 9/16" diameter holes, equally spaced along an inner circumference for attaching 1/2" diameter bolts.

Extension Pole - One end of the extension pole is attached to the shaft of the base. While the other end (2) has a shaft for attaching to the boom. There is a screw handle (3), that is used to fix the extension pole to the base.

Boom - The boom is made of steel and has a cylinder on one end that attaches to the shaft (2) of the extension pole. The opposite end of the boom has two pulleys (5) with a locking pin (6) to keep the cable from coming off the pulleys. There are 2 brackets (7 and 8) for the attachment of Frontline fall protection and recovery systems and winches. The boom rotates 360 degrees and locks at the required position using the screw handle (4).

Specifications:

Model Number	DAN75-US
Minimum Breaking Strength (MBS)	5000 lbs.
Working load limit	310 lbs.*
Head Room	86"
Overall Height	89"
Reach	26"
Angle of rotation of Davit Boom	360°
Individual leg adjustment increments	infinite
Size for transport and storage:	
Base (not portable)	14" x 14"
Extension Pole	4" x 35"
Davit Boom	17" x 62"
Weight:	
Base	75 lbs.
Extension Pole	32 lbs.
Davit Boom	41 lbs.
Standards Compliance	OSHA, ANSI Z359.1, Z359.4, Z359.18

*Note: ANSI Z359 only applies to workers within the capacity range of 130-310 lbs.

Training:

From OSHA 1910.146 (see The Federal Register for the full text)

(g) Training.

(1) The employer shall provide training so that all employees whose work is regulated by this section acquire the understanding, knowledge, and skills necessary for the safe performance of the duties assigned under this section.

(2) Training shall be provided to each affected employee:

(i) Before the employee is first assigned duties under this section;

(ii) Before there is a change in assigned duties;

(iii) Whenever there is a change in permit space operations that presents a hazard about which an employee has not previously been trained;

(iv) Whenever the employer has reason to believe either that there are deviations from the permit space entry procedures required by paragraph (d)(3) of this section or that there are inadequacies in the employee's knowledge or use of these procedures.

(3) The training shall establish employee proficiency in the duties required by this section and shall introduce new or revised procedures, as necessary, for compliance with this section.

(4) The employer shall certify that the training required by paragraphs (g)(1) through (g)(3) of this section has been accomplished. The certification shall contain each employee's name, the signatures or initials of the trainers, and the dates of training. The certification shall be available for inspection by employees and their authorized representatives.

Installation:

All individuals who may use or be required to use the davit **MUST** be instructed on how to use it correctly. They **MUST** read, understand, and follow all instructions and warnings stated on the davit or contained in or attached to the davit. A review of the proper procedure should be made before each use.

Installation & Assembly Procedure

1. The davit's permanent base must be mounted level with the ground with the post perpendicular to the mounting surface. The base can be attached to a concrete or steel surface using the bolt holes around the base plate or it can be welded to steel construction. In either case, the end user is responsible for the proper installation of the base and to ensure that the mounting surface is of sufficient strength.
2. Position the base so that its center is 26" from the center of the opening ensure that the davit boom can be rotated into position with its cable over the center of the opening.
3. Install the extension pole on the base shaft and fix the position using the screw handle (3).
4. Install the davit boom on the extension pole shaft and fix the position using the screw handle (4)
5. Mount the 3-way SRL to the davit boom.
 - i. The 3-way SRL (available separately) is furnished with a mounting bracket and locking pins for attachment to a Frontline Davit.
 - ii. The device can be mounted to either of the mounting positions (7 or 8) on the davit boom; position the device on the boom's mounting block and align the mounting holes on the bracket and block.
 - iii. Secure the SRL with locking pins. Check that the pin bearings are completely through the bracket and are fully extended. Insert locking clips in holes at end of locking pins.
 - iv. Extend cable out of housing, remove cable retaining pin (6) at end of boom, place cable over pulley sheave (5) and reinsert pin.
 - v. Attach the locking swivel snaphook at the end of the SRLs cable to the back D-ring of an appropriate full-body harness.
6. If you are using a hanging self-retracting lifeline (SRL), connect the SRLs bracket to the accessory mounting plate (9) using a locking carabineer.

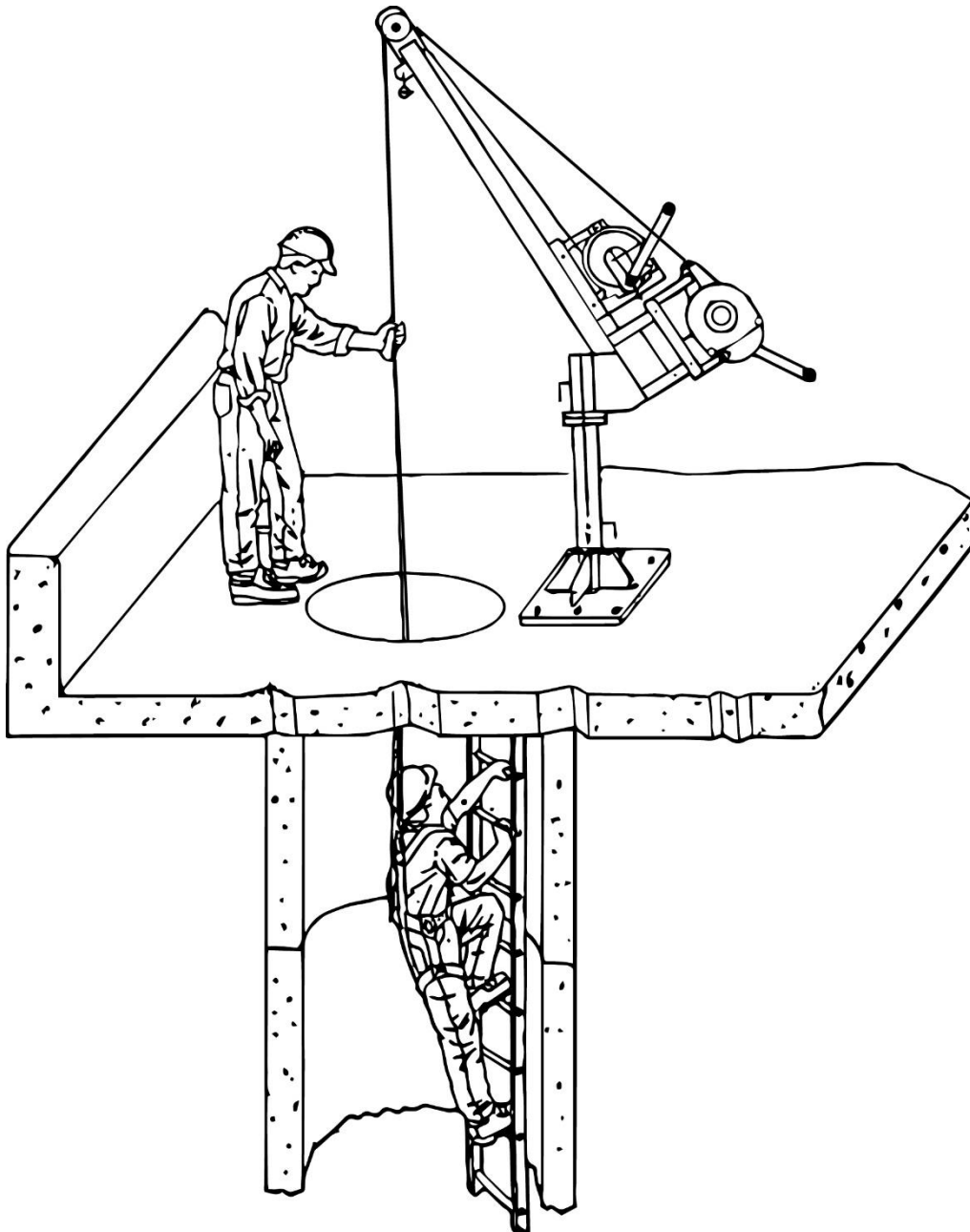


Figure 1

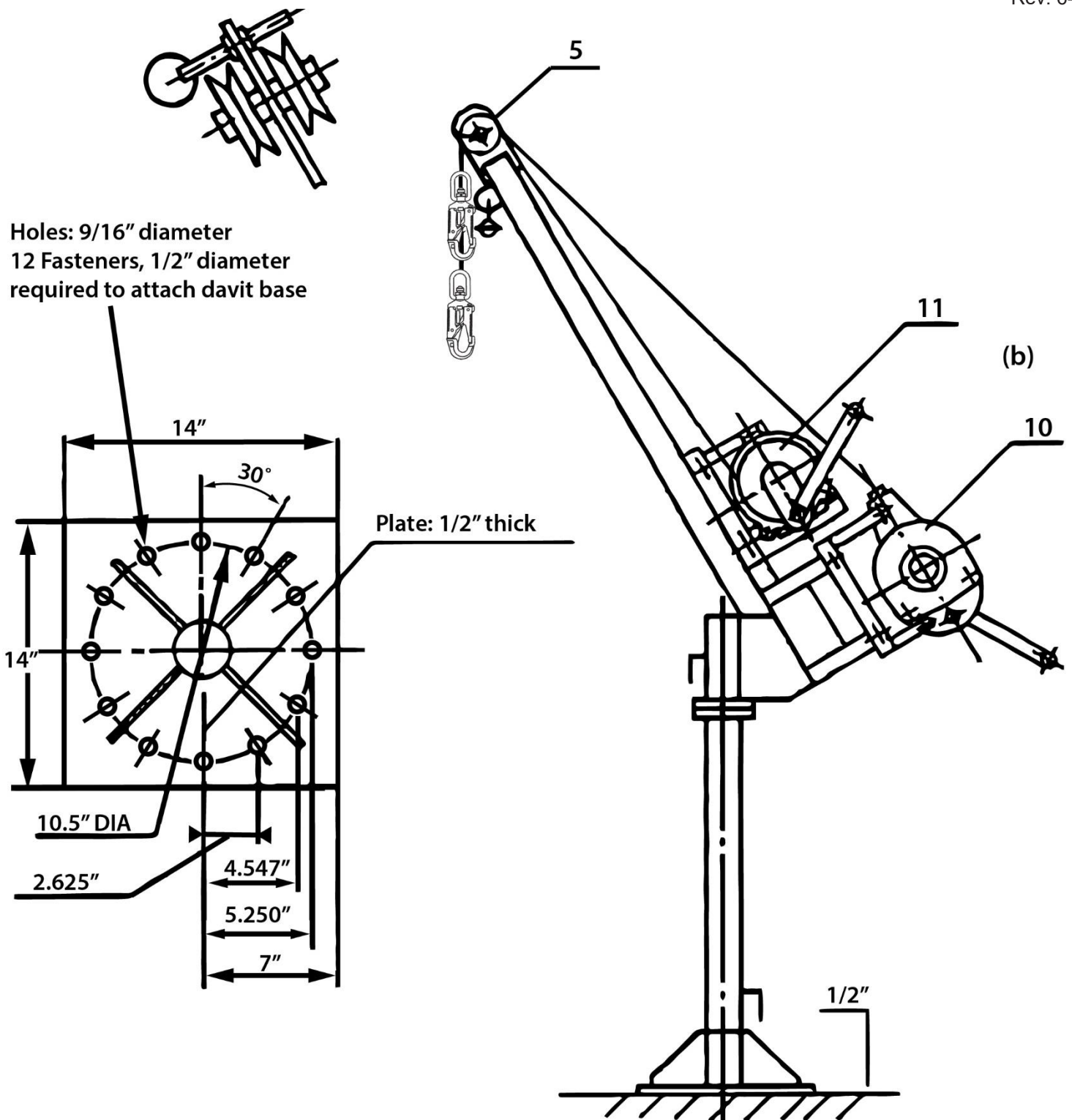


Figure 2

Inspection:

BEFORE EACH USE

All equipment must be inspected before each use; if bent, damaged, if parts have been substituted or if operation is questionable in any way, DO NOT USE. Contact Frontline for reconditioning or repair information.

Inspect work area:

Inspect and clear the vicinity around the work area of debris and other materials that could cause injuries or interfere with the operation of the device.

Operating Instructions:

1. Mount fall arrest/retrieval device (10) to bracket (7 or 8) on top of davit boom using locking pins, pull or winch cable from the housing of the device and put through pulley (5) at top of davit boom.
2. If using a secondary winch (11), Mount to accessory mounting bracket (8) on top of davit boom, pull out winch cable from the housing of the device and put through pulley (5) at top of davit boom.
3. If you are using a self-retracting lifeline (SRL), connect the SRLs bracket to the accessory mounting plate (9) using a locking carabiner.

Operating Instructions *(continued)*:

4. Remove manhole cover, **being sure to avoid opening.**
5. Position davit boom over opening.
6. Extract cable from fall protection unit and attach snaphook to fall arrest D-ring on worker's harness.
7. When work is completed, reverse instructions to cover manhole, remove davit boom from work location (if being stored off-site).

Note:

- Always use hardware and related equipment, which meet OSHA and ANSI standards. Operations should be conducted in accordance with the instructions for the equipment being used and federal, state, and local regulations.

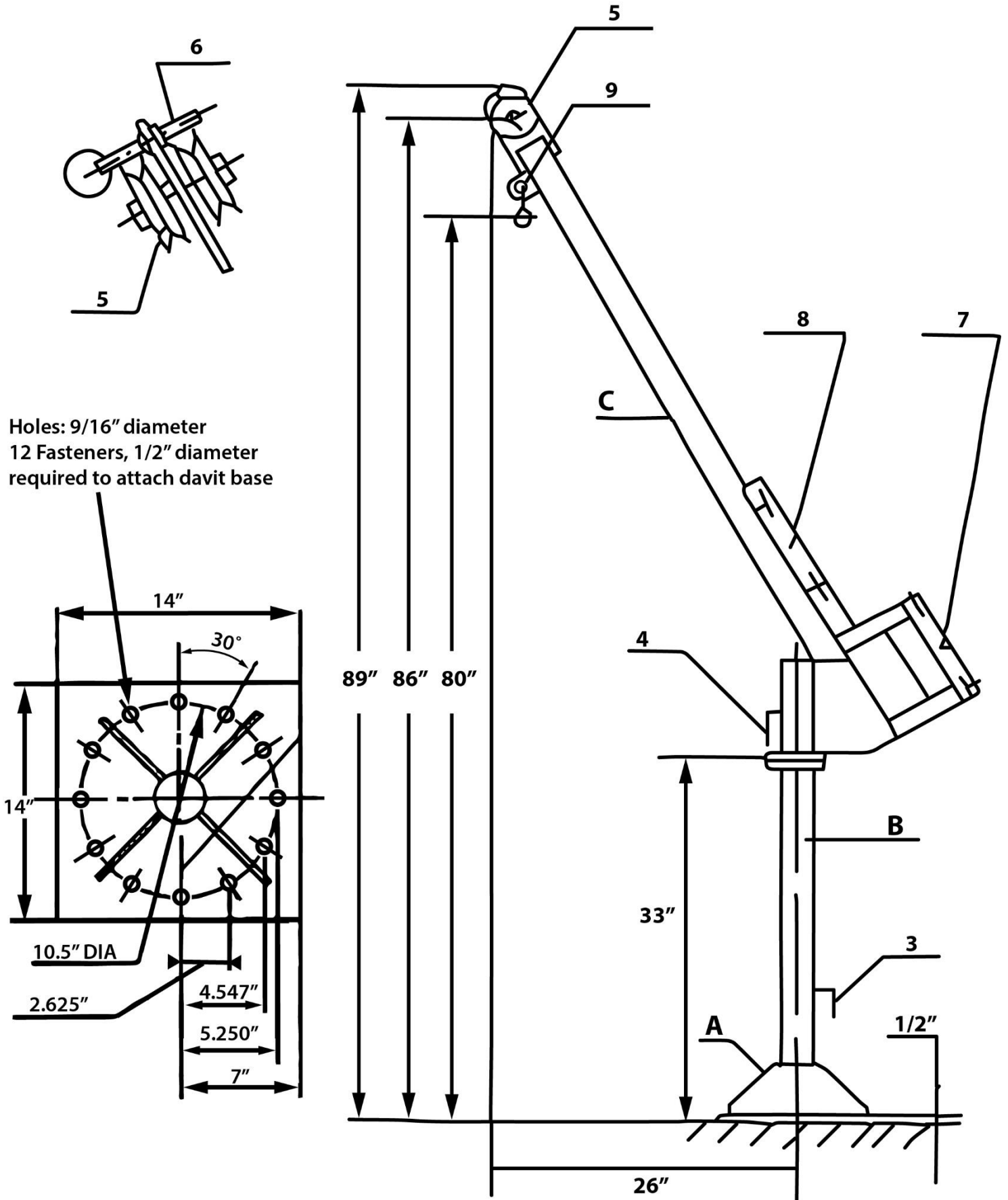


Figure 3

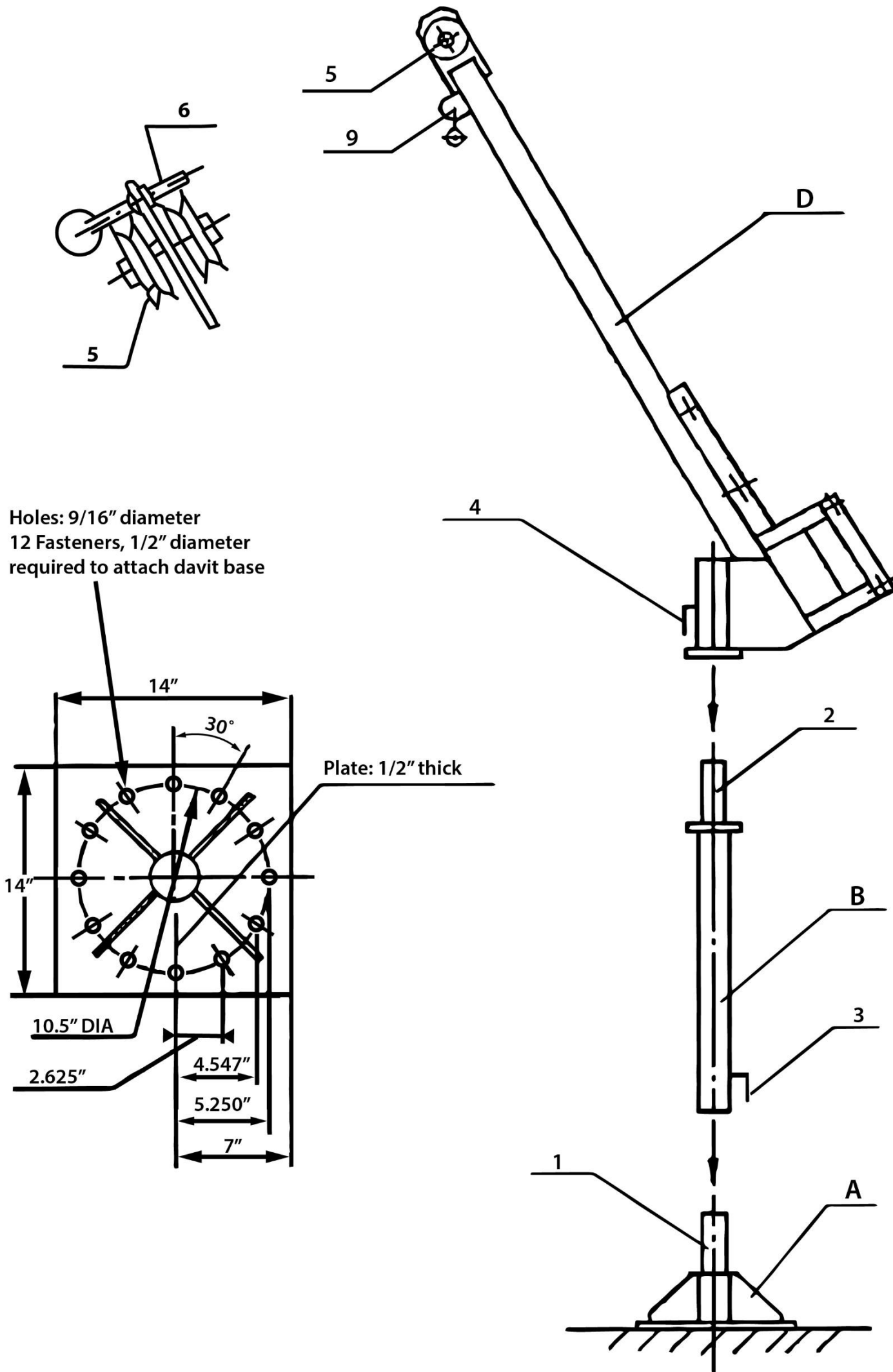


Figure 4

Warnings:

- **Employer:** Instruct employee as to proper use and warnings before use of this equipment.
- Designed only to raise or lower one worker of not more than 350 lbs. Or equipment of not more than 600 lbs. **DO NOT** exceed maximum recommended working load.
- **Read, understand and follow** all instructions and warnings provided with this unit.
- For use by properly trained personnel only.
- **ALWAYS** use the buddy system (two workers) while operating.
- **ENSURE** that the davit is mounted to a hard, stable surface before use.
- To ensure compatibility, use only Frontline components.
- Inspect before use. If any part or component shows damage or excessive wear, or does not function properly, the entire unit should be removed from service. **DO NOT USE IF** The device appears to be damaged.
- All occupational protective equipment must be inspected and thoroughly tested before each use.
- **DO NOT** attempt to adjust, repair or modify Frontline Davit; for prompt repair or reconditioning, contact Frontline.
- **DO NOT** use for other than intended purpose.
- **NEVER** work above the anchor point.
- **ALWAYS** work directly under the anchor point. Worker must be vertically in line with device to avoid swing-fall injuries (pendulum effect).

Swing Fall Hazard

Work directly under your anchorage whenever possible. If a swing fall can occur, ensure that there are no hazards in the swing fall path. Total fall distance is greater in a swing fall than in a vertical fall. Ensure that you account for the added distance when calculating Minimum Required Fall Space.

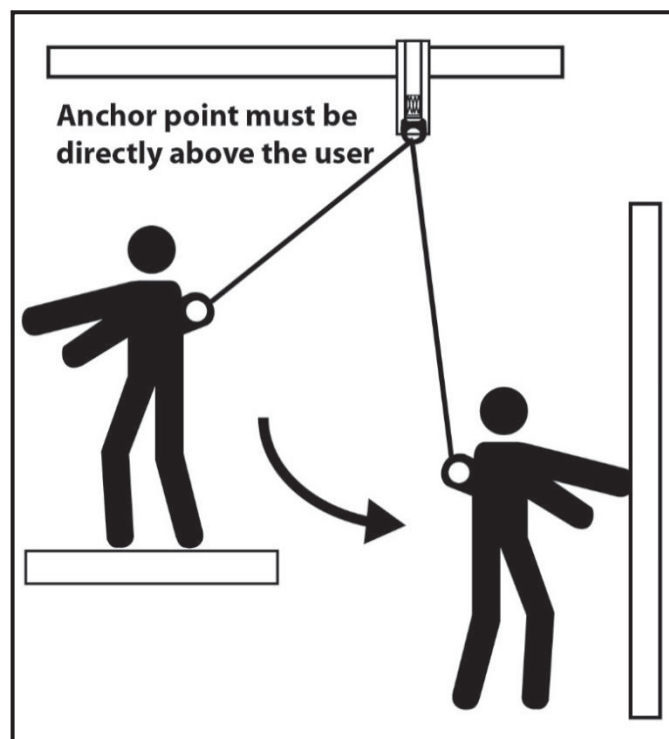


Figure 5

IF YOU HAVE ANY QUESTIONS CONCERNING THE CORRECT USAGE OF THIS OR ANY FRONTLINE PRODUCT, DO NOT USE, CONTACT FRONTLINE FALL PROTECTION AT: www.FrontlineFall.com or info@FrontlineFall.com

Do not try to adjust, repair or modify Frontline equipment; for prompt service, please contact Frontline. See page 8 of these instructions for contact info.

Inspection Log:

Model #: _____	
Serial #: _____	
Date of Purchase: _____	
Date of first use: _____	

Notes:



VISIT US

2023 NW 84th Ave
Miami, FL 33122

WWW.FRONTLINEFALL.COM

info@FrontlineFall.com

DISCOVER MORE ...

