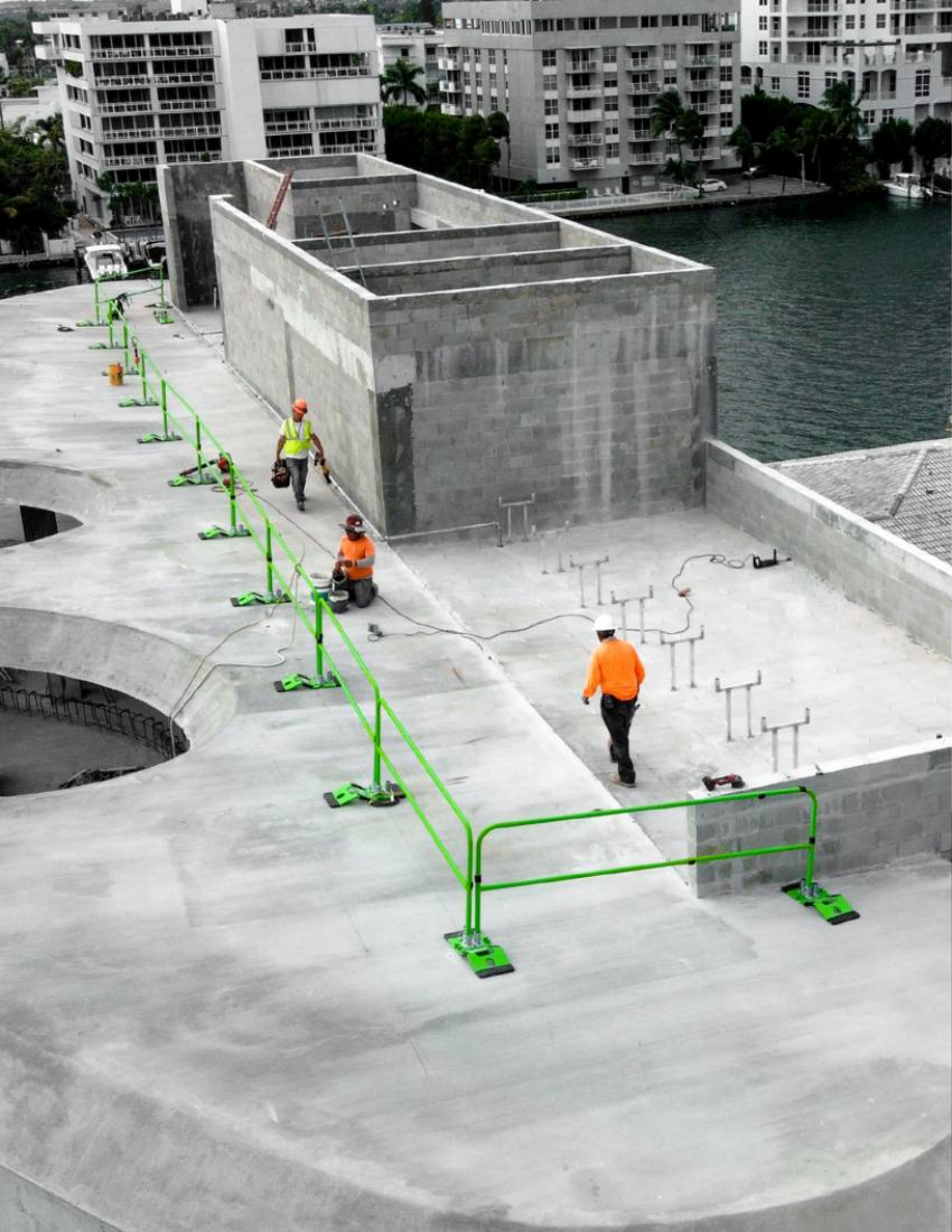


An aerial photograph of a multi-story building under construction. The building features curved balconies and is surrounded by other high-rise buildings in the background. Several workers in safety gear are visible on the upper levels, which are equipped with bright yellow safety railings. The scene is set against a backdrop of a city skyline and palm trees.

GUARDRAIL SYSTEMS

FRONTLINE[®]
FALL PROTECTION



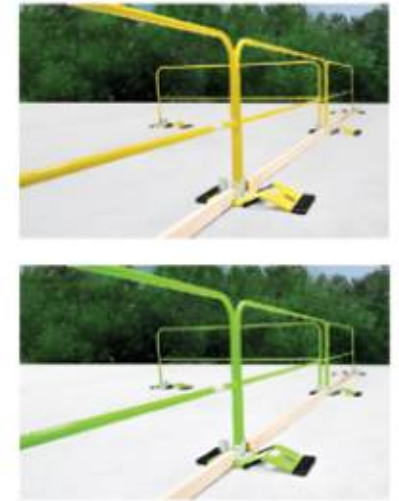
COMPLETE NON-PENETRATING FALL PREVENTION SYSTEM

The lightest and most innovative fall prevention guardrail system in the market!



KIT INCLUDES
11 Bases
10 Guardrails

AVAILABLE KIT LENGTHS
GUS10 — 100'
GUS75 — 75'



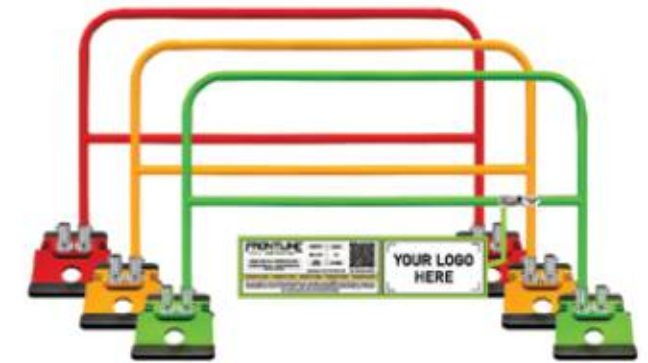
IN-HOUSE CUSTOMIZATION



**CUSTOM COLOR
UPON REQUEST**

Minimum order of 6 kits
4-6 WEEK LEAD TIME

Give your brand visibility by providing a file with your logo and desired color for your guardrails.



1926

1910

EPDM ERGONOMIC HANDLES

For better product handling

EPDM SUPPORTS

For better stability

PATENT PENDING
#63458444



**INCLUDES UNIVERSAL
TOE BOARD SLOTS**

To protect personnel
in lower levels

GUARDRAIL SYSTEMS

GUARDRAILS 56 LBS BASE

GUB56



The Frontline base is intended to go with our Guardrail Systems. The Frontline base is lightweight and its innovative design brings the best in class when installed with our rails and used in conjunction as a fall prevention system.

KEY FEATURES

- Bases include 2 extended EPDM supports on both sides for better stability
- Features the lightest base in the market and includes two convenient EPDM handles for better product handling and ergonomics
- Includes two universal toe board slots to protect personnel beneath the system or items from falling out of the top surface

BASE TOTAL WEIGHT

56 lbs

PATENT PENDING

#63458444

GUARDRAIL FOR CONCRETE OR STEEL SUBSTRATES

GUS

Frontline features a variety of perimeter edge protection, including non penetrating and fixed solutions for permanent installation. It's manufactured out of high strength ASTM rated steel and painted with safety green or safety yellow electrostatic paint for long lasting durability and added visibility at the workplace.



GUARDRAIL SECTIONS

10' GUS10-EA **7.5'** GUS75-EA

GUARDRAIL SYSTEM FOR FIXED APPLICATIONS

10' GUS10-FXD **7.5'** GUS75-FXD

KEY FEATURES

- Guardrails are electrostatic painted safety green or safety yellow for added safety and visibility
- System can be easily installed in minutes by drilling onto concrete or bolting onto steel substrates
- The rails slide in perfectly into the base fittings and are secured with two grub screws for best stability and to prevent loose rails
- **Available colors:** ■ Safety Green ■ Safety Yellow

GUARDRAIL 5' ROLLING SWING GATE

GUG55



KEY FEATURES

- Swing gate is powder coated safety green or safety yellow for added safety and visibility
- Gate includes support wheel for ease of opening/closing gate
- Comes with built-in pin lock to secure with opposing rail quickly and securely
- Hassle free set-up, just slide into base fitting and tighten grub screws

The Frontline swing gate is uniquely designed to slide directly into any of the fittings of Frontline bases. Tighten, adjust accordingly and it's practically ready to use to give safe access and egress to workers using the Frontline guardrail systems!

Available colors: ■ Safety Green ■ Safety Yellow

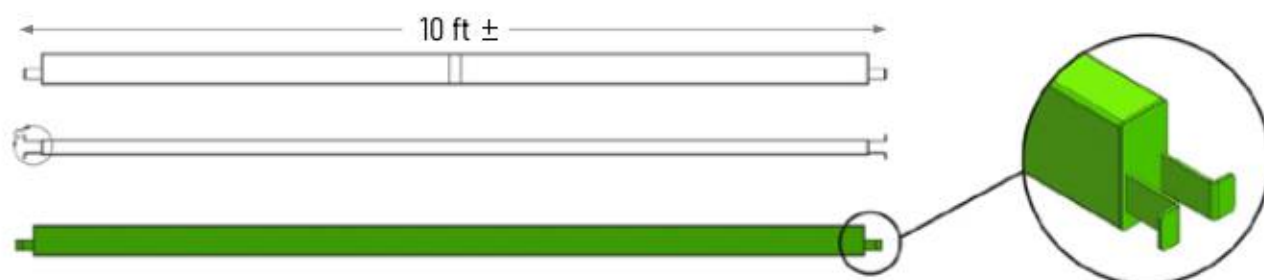


Frontline Guardrail System
CAN BE STACKED 4 PALLET HIGH
for better and more efficient transportation

TOE BOARD

GUTO10

Frontline Toe Board attachments fit perfectly into the GUS10 guardrail systems. They have end clip to slide right into the bases for a secure and snug fit to ensure nothing falls from the roof or deck onto lower level to protect personnel. It's manufactured out of high strength ASTM rated steel and painted with safety green or safety yellow electrostatic paint for long lasting durability and added visibility at the workplace.



KEY FEATURES

- Electrostatic painted safety green or safety yellow for added safety and visibility
- Toe boards can be easily installed in just minutes
- Toe Boards fit perfectly into the base
- Available colors: ■ Safety Green ■ Safety Yellow ■ Hot Dip Galvanized



FRONTLINE SAFETY GUARDRAIL SYSTEM

SCAN QR CODE TO WATCH VIDEO

GUARDRAIL BASE LIFTING DOLLY

GUBDO



The Frontline base dolly is designed to help users move the bases easily and with very little effort! This helps the worker be more productive and helps reduce lifting injuries for better ergonomics when transporting the bases throughout the jobsite or for long distances.

Available colors: ■ Safety Green ■ Safety Yellow

KEY FEATURES

- EPDM ergonomic grips for easy transporting and handling
- Flat free tires for long lasting use on all the different substrates
- Made out of quality material featuring ASTM rated steel with electrostatic safety colored paint
- Lightweight so carry it and use it from jobsite to jobsite



GUARDRAIL CART

GUSCART

Introducing the Frontline Guardrail Cart – your ultimate solution for effortless and ergonomic transport of guardrails and bases on the job site.

Crafted with innovation, this cart streamlines your workflow by accommodating up to 10 rails and 11 bases simultaneously. Its user-friendly design ensures ease of use, allowing you to navigate through job sites with utmost convenience.

Equipped with a spacious auxiliary storage unit, the Frontline Guardrail Cart not only transports your materials efficiently but also offers convenient storage for tools and miscellaneous items essential for your tasks.

Made with high-quality materials, this cart guarantees durability and longevity, standing the test of time in demanding work environments.



MANHOLE GUARDRAIL

GUM



Available colors: ■ Safety Green ■ Safety Yellow

The Frontline manhole guardrail is used for confined space entries that require a temporary barrier to prevent accidental fall through or to prevent each employee working in the space from foreign objects entering the space as described by OSHA.

AVAILABLE DIMENSIONS

32" X 32" GUM32 **42" X 42"** GUM42

KEY FEATURES

- For manhole use for confined spaces to protect those working inside and outside the work area
- Collapsible product design makes it easy to store and transport
- Powder coated safety green for added visibility and safety
- Conveniently sets-up in seconds, no tools required
- Includes two chains for added safety





FRONTLINE[®]

FALL PROTECTION

WWW.FRONTLINEFALL.COM

INFO@FRONTLINEFALL.COM