

INSTRUCTION MANUAL

FRONTLINE®

FALL PROTECTION



USER MANUAL

UNIVERSAL LADDER STABILIZER

LAS48

Rev. Feb. 2026

Frontline Fall Protection Inc.
INSTRUCTION MANUAL

This product meets applicable ANSI A14.8-2020 fall protection standards.
These instructions apply to the following model(s):

LAS48

Applicable standards and regulations depend on the type of work being done, and also might include state-specific regulations. Refer to local, state, and federal (OSHA) requirements for additional information concerning the governing body of occupational safety regarding Personal Fall Arrest Systems (PFAS) and ladder safety.

All users must refer to local, state or federal safety and health regulations before using this equipment. If there's a contradiction between any local, state, federal requirement and/or standard with this manual or within this manual, whichever is the most stringent will apply.

You are required to read and fully understand the user instruction manual BEFORE using this product. Improper use and installation can result in serious injury or death. User manuals occasionally may be updated so for the latest user manual please visit

www.frontlinefall.com/uim.

TABLE OF CONTENTS

General Statement and Warnings _____	4
Training _____	4
Parts _____	5
Installation _____	5
Maintenance, Storage and Transportation _____	9
Inspection checklist and Log _____	9

SPECIFIC USE: The Frontline Ladder Stabilizer is used to help provide better stability to the user when working and using a compatible straight or extension ladder.

SYSTEM SPECIFICATIONS:	
USER CAPACITY:	1 Person with a combined weight (clothing, tools, etc.) of no more than: 310 lbs.
MATERIAL:	Straight or Extension Ladder Extra Heavy Duty - Type A1 Heavy Duty - Type I Medium Duty - Type II Light Duty - Type III
DIMENSIONS:	46" x 12" x 12"
WEIGHT:	6 lbs

GENERAL STATEMENT AND WARNINGS

Ladder rungs should not be more than 3" and ladder stabilizer should be positioned on the top of ladder and up against the wall/surface as shown on Figure 1. Always maintain a 4:1 angle ratio prior using the system and ladder and follow all the safety ladder precautions as described by OSHA/ANSI and ladder manufactures user instructions.

Do not use ladder or ladder stabilizer in an uneven surface or up against a wall/surface that is not structurally sound and flat. User must be fully trained for safe ladder usage and fall protection before using ladder stabilizer. Always inspect prior using the ladder stabilizer and ensure it's installed correctly, and it's fully secured on the ladder before usage.

Follow the step-by-step instructions and ensure to read all the user manual before using and/or installing the Ladder Stabilizer. For further information please contact us at info@frontlinefall.com.

TRAINING

Before using Frontline Fall Protection product, user and employers must ensure that the person using this equipment has been trained on the proper use, care and maintenance of this product by a competent person qualified in Fall Protection. It is the responsibility of the user of this product to ensure that proper training has been done in addition to reading and fully understanding these user instructions manual.

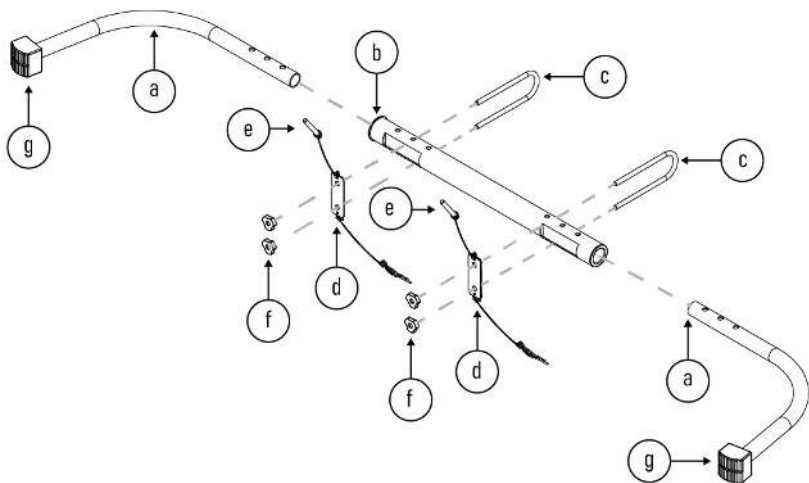
Additionally, the employer must establish a training program to employees that are exposed to a fall hazard and trained by a competent person qualified in those areas. The program shall enable each employee to recognize the hazards of falling and shall train each employee in the procedures to be followed in order to minimize these hazards. Retraining is necessary when the employer has reason to believe that any affected employee who has already been trained does not have the understanding and skill to carry out those duties. Circumstances where retraining is required include, but are not limited to, situations where:

- Changes in the workplace render previous training obsolete.
- Changes in the types of fall protection systems or equipment to be used render previous training obsolete.
- Inadequacies in an affected employee's knowledge or use of fall protection systems or equipment indicate that the employee has not retained the requisite understanding or skill.
- Changes in the OSHA regulations or ANSI standards.

Training must be done in the language that the employee understands and shall, be documented and kept as outlined under OSHA recordkeeping regulations. No user or employee shall perform work without the proper training and understanding on how to properly and safely use this product.

Training must also be performed in ladder safety according to the ladder manufacturer and OSHA, ANSI and any other local safety ladder standards before using this product and a ladder. The most stringent standard, shall apply.

LADDER STABILIZER ASSEMBLY DIAGRAM:

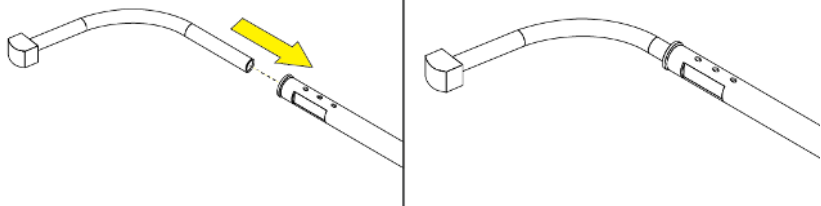


PARTS	
Left and Right Side Rail	a
Intermediate Bracket	b
U-Bolts	c
Tie Back Plates	d
Bracket Pins	e
Plastic Nuts	f
Rubber Supports	g

INSTALLATION

1. Insert side rails (a) into intermediate bracket (b) and accordingly to ladder width and desired width of stabilizer (40" - 46").

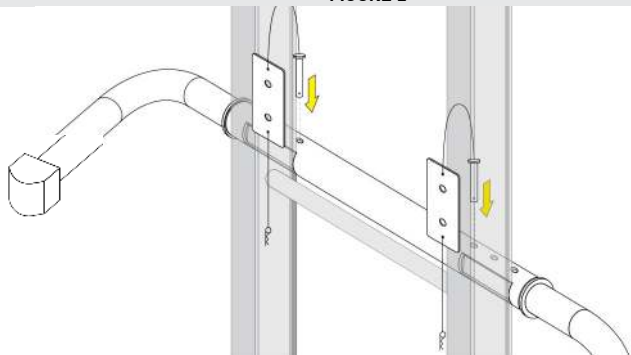
FIGURE 1



2. Locate the ladder's top rung, and insert the Bracket Pins (e) of the Tie Back Plates (d) into the hole that best fits your ladder inside the ladder side rails.

- a. Ensure both left and right side rails match the same holes and maintain the same distance on the Intermediate Bracket.

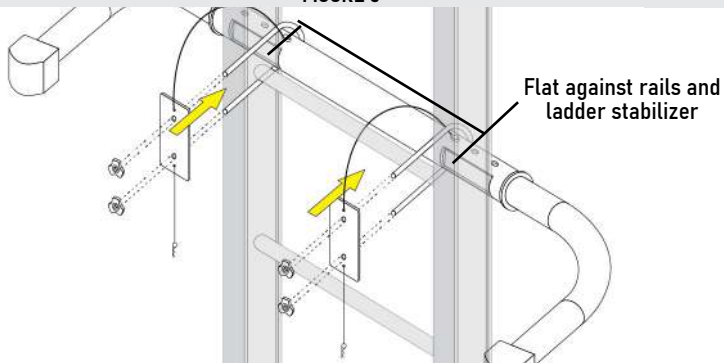
FIGURE 2



3. Place the U-Bolts (c) over the ladder rungs facing the Ladder Stabilizer.

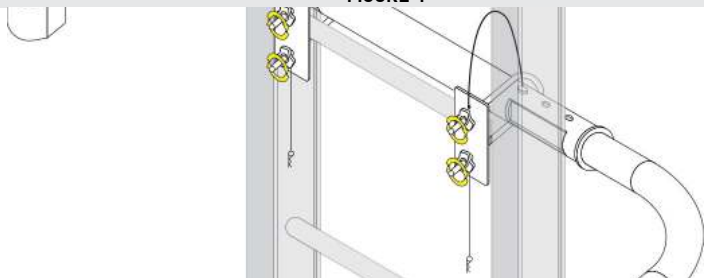
- a. Ensure the ladder rails and frame are up against the flat part of the ladder stabilizer

FIGURE 3



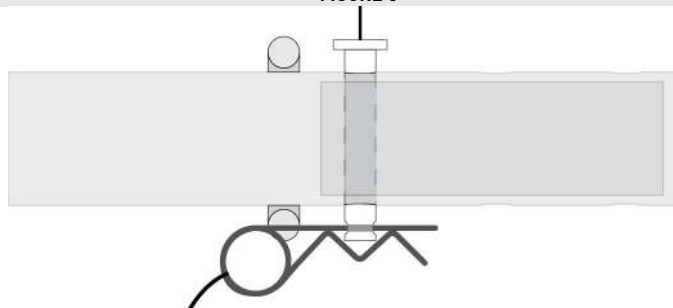
4. Tighten them with the Plastic Nuts (f) and ensure they are tight and secure with the ladder rung.

FIGURE 4



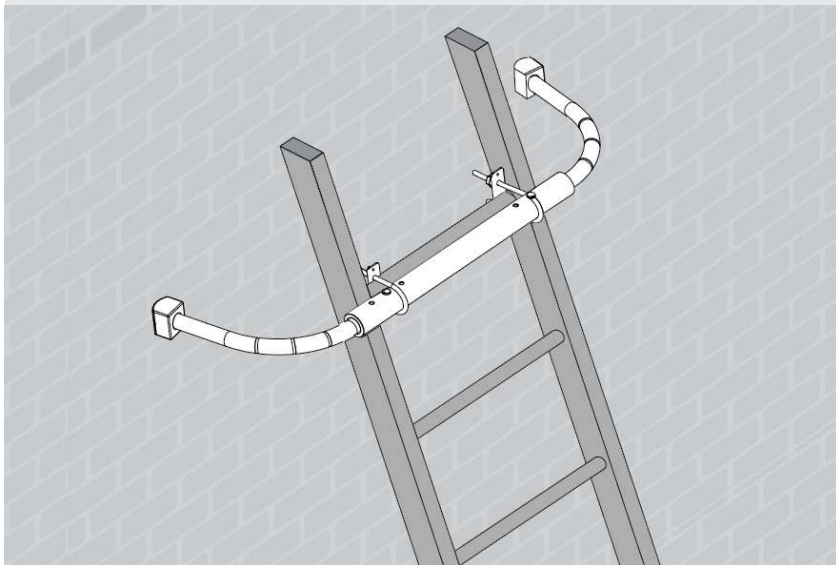
5. Secure the Bracket Pins (e) by inserting the safety pins at the bottom end of the ladder rung.

FIGURE 5



6. Ladder stabilizer side rails should be perpendicular to ladder in order to support up against wall/surface accordingly.

FIGURE 6



PRECAUTIONS AND WARNINGS:

- Inspect ladder and ladder stabilizer before each usage
- Stay a minimum of 10' away from electrical power lines
- Equipment has a maximum capacity of 300 lbs, do not go over this weight capacity including person, tools and other equipment (up to an Extra Heavy Duty Ladder - Type IA)
- Never exceed the maximum capacity load of the ladder
- Don't use the ladder stabilizer if it's missing components or the structural integrity is questionable
- Always maintain a good and solid balance when using ladder stabilizer and ladder
- Never overextended/overreach when using the ladder
- For added safety, ensure you have enough clearance on both sides of the wall, at a minimum of 2'
- Always maintain a 4:1 safety ratio
- Do not use in conjunction with ladder jacks using planks or stages, multi-use ladder, step ladder or other non compatible ladders
- All user must refer to local, state or federal safety and health regulations before using this equipment. Whichever is most stringent shall supersede and apply.

MAINTENANCE, STORAGE AND TRANSPORTATION

MAINTENANCE: In order to maintain product in good standing, it is necessary to keep them cleaned and in good condition. Avoid surface contamination such as concrete, stucco, roofing material, chemicals or other harmful substances that could accelerate cutting, abrading, damaging and/or rusting/corroding of products. Use warm water and soap to wash any containments and then dry off to help extend the life of the product.

Product that needs to undergo deeper maintenance and repairs outside of cleaning with warm water and soap is not recommended. Any rust preventative measures, chemical exposures repairs/maintenance and/or other deeper maintenance are in the sole responsibility of the user and must be approved by a qualified person. Frontline assumes and takes no responsibility for maintenance measures outside of light maintenance as described above. Product that does not pass inspection or is questionable needs to be taken out of service immediately.

STORAGE: If products are not temporarily or permanently installed, when possible, all products shall be stored at room temperature in indoor space, lockers or in a clean area away from sunlight, rain and other environmental conditions. Products should be also stored where they are not exposed to chemical, oils, paint, concrete, or other contaminants that might compromise the integrity of the product. Equipment that has been physically exposed such as rain/dirty water, concrete, paint, buildup of other construction material or other surface contamination shall be cleaned and dried before storage.

TRANSPORTATION: Ensure to transport product where it doesn't beat up against other products as this might cause damage to products and terminate the use of them. Product also should not be transported with harmful substances or chemicals as this might also compromised the integrity of the product.

INSPECTION CHECKLIST AND LOG			
MODEL NUMBER:		DATE OF FIRST USE:	
INSPECTION:		PASS	FAIL
LADDER STABILIZER:	Prior to installation and prior to each use / Inspection by a competent person is required every 6 months.		
	Ensure ladder frame is flat up against intermediate bracket		
	Ensure bracket pins are fully inserted		
	Ensure safety pins are installed into bracket pins		
	Ensure U-bolts and nuts are secured and tight up against tie back plates and ladder rungs		
	Ensure ladder stabilizer is installed tight, secure and stable onto ladder		
	Ensure ladder stabilizer rubber supports are in place and secure		
	When installed, ladder stabilizer side rails and supports are perpendicular to the ladder		
	Ensure ladder rungs and ladder in general is safe for use according to ladder manufacturer user manuals		
	Ensure to follow all ladder manufacturer's user and safety instructions		
Ensure to comply with all OSHA/ANSI requirements for safe ladder usage			

INSPECTION LOG

COMPETENT PERSON:	DATE OF INSPECTION	PASS	FAIL

LABELS

FRONTLINE
FALL PROTECTION

Warning to user: You are required to read and fully understand the user instruction manual **BEFORE** using this product. Improper use and installation can result in serious injury or death. User manuals occasionally may be updated so for the latest user manual please visit www.frontlinefall.com/uim.

Installation: Consult manual



PART N° LAS48

BATCH N° 102

DOM
MM-YYYY 08-2024

WWW.FRONTLINEFALL.COM FRONTLINE FALL PROTECTION INC. MADE IN COLOMBIA



Frontline Fall Protection Inc.

www.frontlinefall.com

info@frontlinefall.com

©2026 Frontline